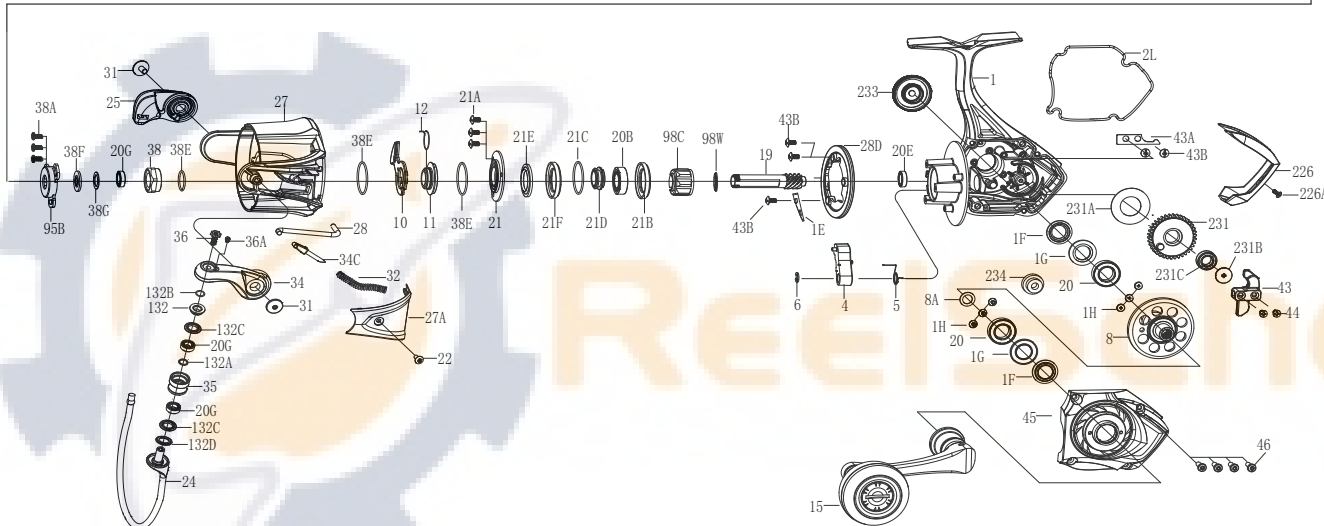
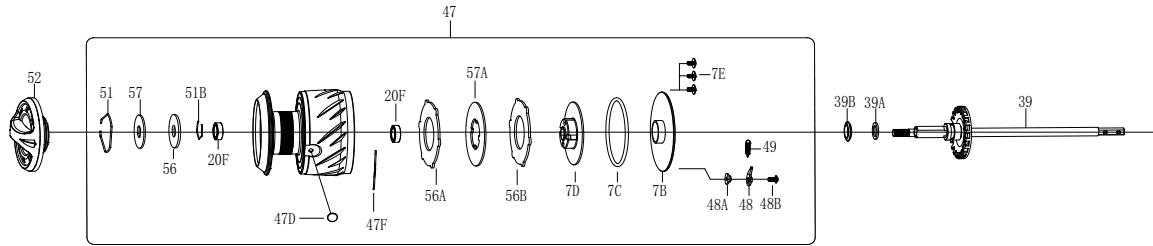




PARTS LIST FOR MODEL AS ATH5500



KEY NO.	PART NO.	PENN STYLE NO.	DESCRIPTION
1	1577983	1-ATH5500	Housing Assembly
1E	1489417	1E-SSV15500	Housing Slope
1F	1489419	1F-SSV15500	Main Gear Seal Ring (2 req)
1G	1489418	1G-SSV15500	Seal Plate (2 req)
1H	1489176	1H-SSV13500	Bearing Screw (6 req)
2L	1577984	2L-ATH5500	Housing Seal Ring
4	1489421	4-SSV15500	A/R Pawl
5	1489422	5-SSV15500	Pawl Spring
6	1190979	6-5000SG	Retaining Clip
7B	1577985	7B-ATH5500	Spool Pedestal Cover
7C	1577803	7C-ATH7500	O-ring
7D	1577987	7D-ATH5500	Spool Pedestal Cover
7E	1577805	7E-ATH7500	Screw (3 req)
8	1577989	8-ATH5500	Main Gear
8A	1485572	8B-PUR1115000	Shim
10	1489424	10-SSV15500	A/R Holder

KEY NO.	PART NO.	PENN STYLE NO.	DESCRIPTION
11	1577990	11-ATH5500	Bushing
12	1489426	12-SSV15500	Bushing Spring
15	1577991	15-ATH5500	Handle Assembly
19	1577992	19-ATH5500	Pinion Gear
20	1577993	20-ATH5500	Ball Bearing (2 req)
20B	1577994	20B-ATH5500	Ball Bearing
20E	1577814	20E-ATH7500	Ball Bearing
20F	1577813	20F-ATH7500	Ball Bearing (2 req)
20G	1577830	35A-ATH7500	Ball Bearing (3 req)
21	1577998	21-ATH5500	Bearing Retainer
21A	1192645	21A-5000SG	Screw (3 req)
21B	1577999	21B-ATH5500	Collar
21C	1577817	21C-ATH7500	Bearing Retainer O-Ring
21D	1578001	21D-ATH5500	Seal
21E	1577819	21E-ATH7500	Pinion Gear Seal
21F	1578003	21F-ATH5500	Bearing Cover

KEY NO.	PART NO.	PENN STYLE NO.	DESCRIPTION
22	1577821	22-ATH7500	Screw
24	1578005	24-ATH5500	Bail Wire
25	1578006	25-ATH5500	Bail Holder
27	1578007	27-ATH5500	Rotor
27A	1578008	27A-ATH5500	Bail Pivot Cover
28	1578009	28-ATH5500	Trip Lever
28D	1489395	28D-SSV15500	Rotor Brake
31	1577827	31-ATH7500	Bail Arm Screw (2 req)
32	1578011	32-ATH5500	Bail Spring
34	1578012	34-ATH5500	Bail Arm
34C	1489399	34C-SSV15500	Pivot Arm
35	1578013	35-ATH5500	Line Roller
36	1577831	36-ATH7500	Bail Stud Screw
36A	1577832	36A-ATH7500	Bail Stud Screw
38	1578016	38-ATH5500	Rotor Nut
38A	1577834	38A-ATH7500	Rotor Nut Cover Screw (3 req)
38E	1489203	38E-SSV13500	Rotor O-Ring (3 req)
38F	1578018	38F-ATH5500	Main Shaft Seal Ring
38G	1578019	38G-ATH5500	Main Shaft Seal Ring
39	1578020	39-ATH5500	Main Shaft Assembly
39A	1577837	39A-ATH7500	Thrust Washer
39B	1577838	39B-ATH7500	Shaft Seal
43	1578023	43-ATH5500	Crosswind Block
43A	1578024	43A-ATH5500	Crosswind Block Plate
43B	1489213	43B-SSV13500	Plate Screw (5 req)
44	1191845	44-5000SG	Crosswind Block Screw (2 req)
45	1578025	45-ATH5500	Housing Cover Assembly
46	1577842	46-ATH7500	Housing Cover Screw (4 req)
47	1578027	47-ATH5500	Spool Assembly
47D	1489408	47D-SSV15500	Line Clip
47F	1577921	47F-ATH2500	Line Clip Spring
48	1578029	48-ATH5500	Click Tongue
48A	1578030	48A-ATH5500	Click Tongue Washer
48B	1577845	48B-ATH7500	Spool Click Screw
49	1211627	49-5000SG	Click Tongue Spring
51	1308112	51-CFT5000	Drag Retaining Ring
51B	1577846	51B-ATH7500	Drag Retaining Ring
52	1578033	52-ATH5500	Drag Knob Assembly
56	1577848	56-ATH7500	Drag Washer
56A	1578035	56A-ATH5500	Drag Washer
56B	1578036	56B-ATH5500	Drag Washer
57	1489330	57-SSV17500	Keyed Washer
57A	1578037	57A-ATH5500	Keyed Washer
95B	1489331	95B-SSV17500	Rotor Locking Plate
98C	1578038	98C-ATH5500	Clutch/Sleeve Assembly
98W	1580636	98W-ATH5500	Washer
132	1577853	132-ATH7500	Roller Washer
132A	1577854	132A-ATH7500	Line Roller Bushing
132B	1577855	132B-ATH7500	O-Ring
132C	1577856	132C-ATH7500	O-Ring (2 req)
132D	1578043	132D-ATH5500	Roller Washer
226	1578044	226-ATH5500	Rear Cover
226A	1577858	226A-ATH7500	Rear Cover Screw
231	1578046	231-ATH5500	Crosswind Gear Assembly
231A	1578047	231A-ATH5500	Crosswind Gear Washer
231B	1489230	231B-SSV13500	Crosswind Gear Screw
231C	1577887	20F-ATH5500	Crosswind Gear Bearing
233	1578049	233-ATH5500	Bearing Cover Assembly
234	1578050	234-ATH5500	Transfer Gear

407-ATH5500 Rev. 0 25-2-2022

1563161